

# polygebo

## BRASS-COMPRESSION FITTING INCLUDING SUPPORT SLEEVE



FOR THE REPAIR  
OF PP OR PVC  
PIPES

BETTER.EASIER.FASTER.

**gebo**  
FITS BETTER!



## POLYGEBO

### THE BRASS COMPRESSION FITTING FOR PP OR PVC PIPE

**For drinking water hot/cold  
and heating application**

<b>Application</b>	<b>Temperature</b>	<b>Pressure stages</b>
Drinking water cold	max. 25°C	max 10 bar
Hot drinking water	max. 80°C	max. 6 bar
Heating water	max. 80°C	max. 6 bar

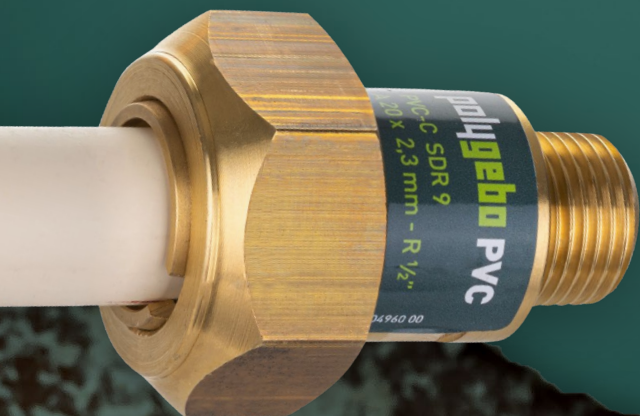
KIWA-ATA 316/20/08/92 Made in Germany

## ADVANTAGES

- No special tools necessary
- Perfect repair due to clamp connector technology (without gluing and welding)
- Extremely time-saving repair
- The perfect transition to other pipe types
- The connection is tension and shear resistant

### Specially for PVC

- Installation also possible with trailing water
- No setting time for adhesive solutions





## MATERIALS

All parts in contact with drinking water fulfil the current German valid hygiene requirements for drinking water of the UBA/Umweltbundesamt (German Environment Agency) and of the 4MSI material composition lists!

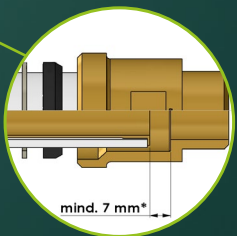
- Fitting body according to assessment basis metals
- Gasket according to KTW-BWGL

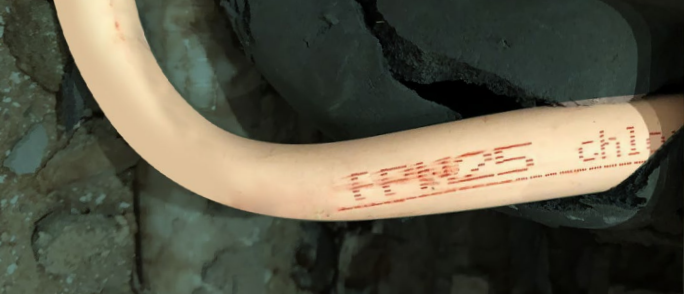
### General information about SDR/wall thickness

- SDR describes the diameter/wall thickness ratio (Standard Dimension Ratio)
- If the pipe marking is not fully legible, the pipe manufacturer must be consulted

! when separating the pipe, pay attention to support sleeve length plus 10 mm

! Please pay attention to the insertion depth according to the installation instructions!





## SUITABILITY TABLE

			WALL THICKNESSES (MM)			
Materials	Pipe standard	Pipe outer-Ø	SDR 6	SDR 7,4	SDR 9	SDR 11
<b>PP-R PP-RCT</b>	<b>DIN 8077 DIN 8078</b>	20 mm	3,4	2,8	-	1,9
		25 mm	4,2	3,5	-	2,3
		32 mm	5,4	4,4	3,6	2,9
		40 mm	6,7	5,5	4,5	3,7
		50 mm	8,3	6,9	5,6	4,6

The planned expansion of the Polygebo range to include the SDR 7.4 and SDR 6 pipe series is currently under review.

			WALL THICKNESSES (MM)	
Materials	Pipe standard	Pipe outer-Ø	SDR 9 [Pipe T / F]	
<b>PVC-C</b>	<b>DIN 8079 DIN 8080</b>	16 mm	1,8/2,0	
		20 mm	2,3	
		25 mm	2,8	
		32 mm	3,6	
		40 mm	4,5	
		50 mm	5,6	

All pipe patterns serve only as examples. Dimensions according to the table must be observed.



## POLYGEBO PVC

**FOR PVC-C PIPE  
ACCORDING TO DIN 8079/8080, SDR 9  
SERIES 331**

**NOW  
ALSO FOR  
PP-R/PP-RCT PIPE  
ACCORDING TO  
DIN 8077/8078,  
SDR9**



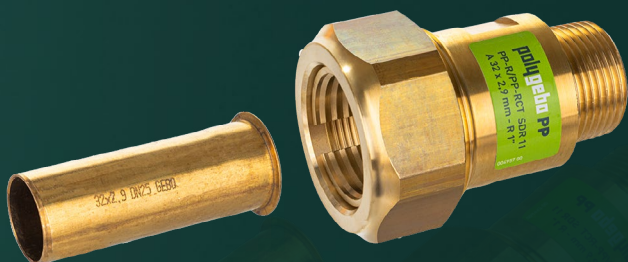
### SIZES AND DIMENSIONS FOR SDR 9

Code	Pipe outer- $\phi$ x wall thickness in mm	Joining thread R according to DIN EN 10226-1 or ISO 7/1	Installation dimension fitting length/diagonal width/SW in mm	Length support sleeve in mm
16331000116	16 x 1,8 / 2,0	1/2"	55 / 35 / 30	45
16331000120	20 x 2,3	1/2"	61 / 47 / 41	60
16331000225	25 x 2,8	3/4"	71 / 53 / 46	65
16331000332	32 x 3,6	1"	83 / 64 / 55	70
16331000440	40 x 4,5	1 1/4"	89 / 75 / 65	75
16331000550	50 x 5,6	1 1/2"	98 / 81 / 70	80



## POLYGEBO PP

**FOR PP-R/PP-RCT PIPE  
ACCORDING TO DIN 8077/8078  
SERIES 330**



### SIZES AND DIMENSIONS

Code	Pipe outer-Ø in mm	Joining thread R accordingly to DIN EN 10226-1 or ISO 7/1	Installation dimension fitting length/diagonal width/WS in mm	Length support sleeve in mm
15330000120	20	1/2"	61 / 47 / 41	60
15330000225	25	3/4"	71 / 53 / 46	65
15330000332	32	1"	83 / 64 / 55	70
15330000440	40	1 1/4"	89 / 75 / 65	75
15330000550	50	1 1/2"	98 / 81 / 70	80

**GEBO Armaturen GmbH**

Gold-Zack-Str. 7-9  
D-40822 Mettmann

T. +49 (0) 21 04 / 80 033-0  
E. [info@gebo.de](mailto:info@gebo.de)

Jetzt **polygebo** entdecken  
unter: [www.gebo.de](http://www.gebo.de)

